



# SO INOX

## segaossa bone saws



- Costruzione in acciaio inox AISI 304.
- Cassetto raccogliresti interbloccato e accessibile dall'esterno (non su mod. Start).
- Sportello facilmente rimovibile per agevolare la pulizia (non su mod. Start).
- Pulegge calibrate costruite in alluminio brillantato.
- Cuscinetti ermetici su puleggia superiore.
- Potenti motori asincroni e ventilati protetti con paraolio di tenuta.
- Comandi 24V con micro di sicurezza su porta e cassetto, centralina di controllo ridondante e freno motore (CE).
- Rapido sblocco puleggia superiore agevola la pulizia e il cambio lama.
- Raschiatori facilmente rimovibili e sostituibili.
- Potenti motori a 6 e 8 poli sviluppano grande forza con poco assorbimento (SO2400 e SO3100).
- Motori monofase con protezione termica di serie.
- Lavabili con spruzzo d'acqua (no alta pressione).
- Comandi in acciaio inox IP 67.
- Utilizzano lame temperate da 16 mm per taglio di ossa, congelato e fresco.

### Opzioni:

- Carrello scorrevole (SO 2020-2400-3100).
- Puleggia SO2400 con bordatura in acciaio inox AISI 304.

- *AISI 304 stainless steel body.*
- *Interlocking scrap pan accessible from the outside (not on model Start).*
- *Easily removable door to facilitate cleaning (not on model Start).*
- *Calibrated pulleys made of polished aluminium.*
- *Sealed bearings on upper pulley.*
- *Powerful asynchronous and ventilated motors protected by lip seals.*
- *Controls (24 V) with safety micro-switch on door and pan, redundancy control unit and motor brake (CE).*
- *Upper pulley with quick-release mechanism to facilitate cleaning and blade change.*
- *Easily removable and replaceable scrapers.*
- *Powerful 6- and 8-pole motors generate considerable force with limited power input (SO2400 and SO3100).*
- *Single-phase motors with standard thermal protection.*
- *Washable with water jet (no high pressure).*
- *IP 67 stainless steel controls.*
- *Equipped with 16 mm tempered blades for cutting bones, frozen foods and fresh foods.*

### Optionals:

- *Sliding carriage (SO 2020-2400-3100).*
- *SO2400 pulley with AISI 304 stainless steel edging.*



SO 3100 INOX



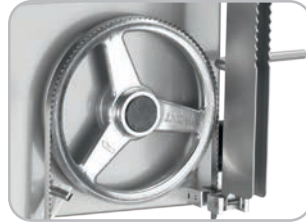
SO 2400 INOX



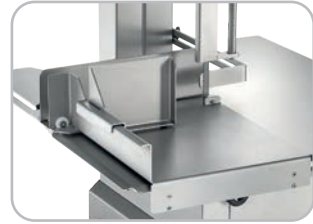
Cassetto raccolta scarti facilmente estraibile per la pulizia  
*Removable wastage tray for easy cleaning.*



Raschiatori lama in materiale plastico alimentare ad innesto rapido. Flangia in materiale plastico alimentare nero a tenuta stagna per protezione motore  
*Alimentary plastic blade scraper in quick to insert. Watertight black plastic flange to protect the motor*



Pullegge superiori ermetiche  
*Hermetic upper pulleys*



Piano scorrevole opzionale  
*Optional sliding table*



Tensionamento lama automatico  
*Automatic blade tensioning*



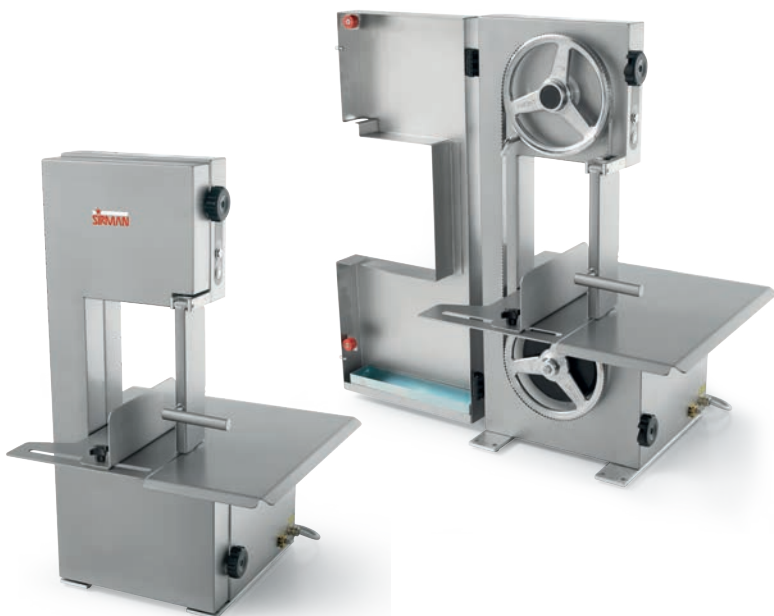
Scala graduata sul piano di lavoro  
*Worktop with graduated scale*



**SO 2400 INOX SX**



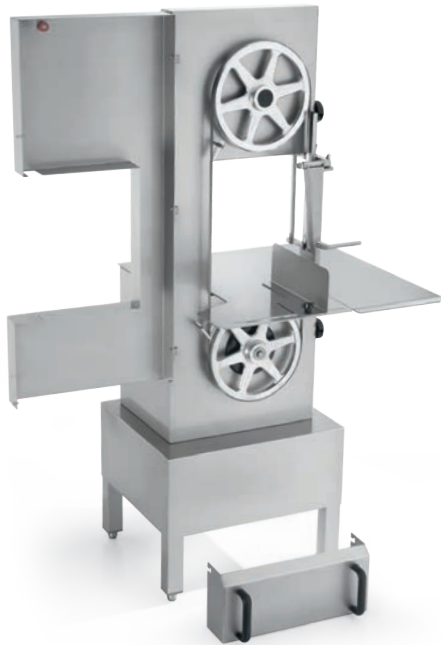
Piano scorrevole opzionale ribaltabile  
*Optional sliding table folding*



**SO 1650-1840 Start**



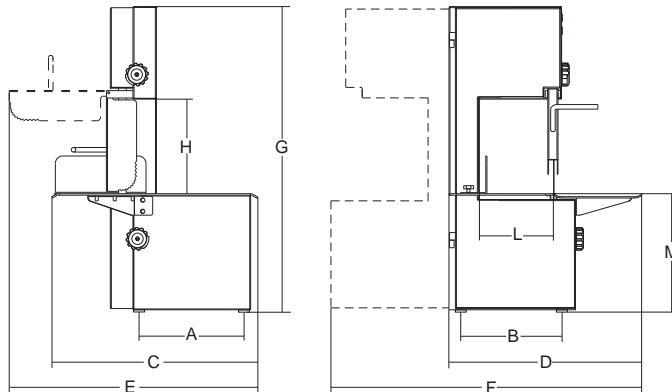
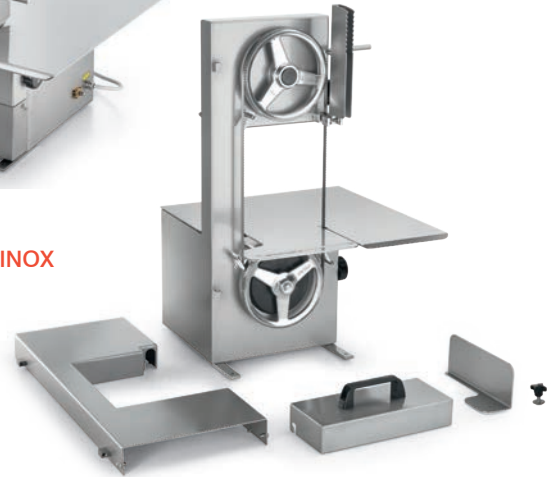
**SO 2020 INOX. PAV.**



SO 2400 INOX



SO 1650 INOX



	mm	Hp/r.p.m.	mm	mm	mm	mm	mm	mm	mm	mm	mm	mm	mm	mm	kg	mm	kg
<b>SO 1650 Inox Start</b>	1650	1ph 1,5/1.400 3ph 2/1.400	210	415x470	315	314	535	520	640	862	815	249	197	320	46	570x720x1020	58
<b>SO 1840 Inox Start</b>	1840	1ph 1,5/1.400 3ph 2/1.400	250	455x470	315	334	537	560	640	923	843	249	237	320	51	570x720x1020	63
<b>SO 2020 Inox Start</b>	2020	1ph 1,5/1.400 3ph 2/1.400	250	475x490	253	346	568	560	710	930	1030	290	236	362	61	570x720x1020	73
<b>SO 1650 Inox</b>	1650	1ph 1,5/1.400 3ph 2/1.400	210	430x545	342	296	545	510	658	840	816	249	197	320	47	570x720x1020	59
<b>SO 2020 Inox</b>	2020	1ph 1,5/1.400 3ph 2/1.400	250	475x490	253	346	568	560	710	930	1030	290	236	362	61	760x640x1430	73
<b>SO 2020 Inox Pav</b>	2020	1ph 1,5/1.400 3ph 2/1.400	250	475x490	467	411	568	603	710	930	1650	290	236	980	70	760x640x1750	82
<b>SO 2400 Inox</b>	2400	1ph 2/900 3ph 2,4/900	300	575x705	444	524	715	750	840	1170	1670	350	287	897	100	1050x950x1960	125
<b>SO 3100 Inox</b>	3100	3ph 2,5/700	400	795x830	444	624	840	966	950	1485	1900	420	388	947	170	1050x950x1960	195